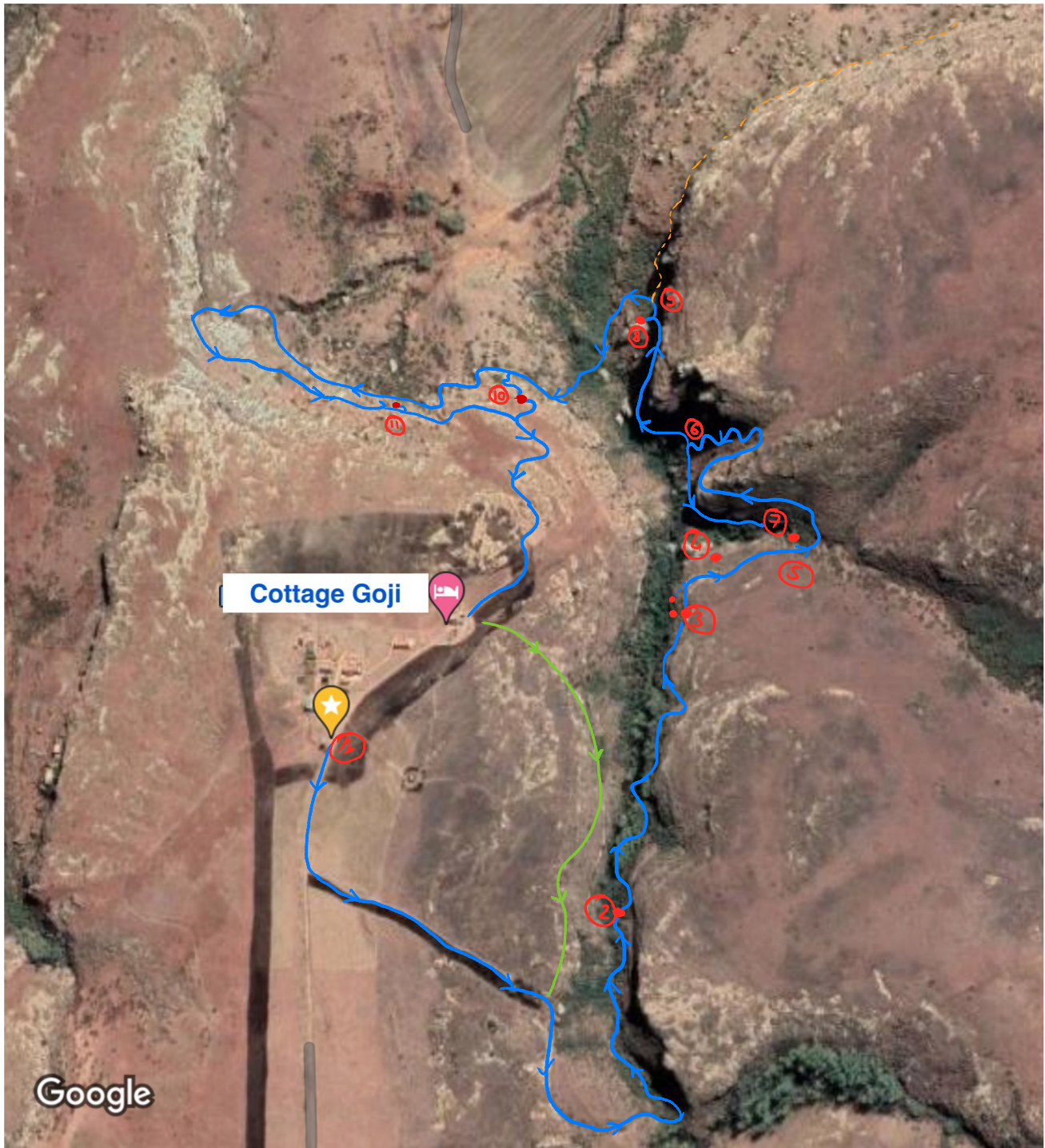


Main hike at Domaine Sérénité

We hope you will enjoy some of the trails we have developed at Domaine Sérénité! Our dogs Magic (the border collie) and Shingyo (the ridgeback) will be thrilled to accompany you on the trails.

The loop: A hike with many highlights. Each step described below takes about 10 min. Allow for 2 to 3 hours for the full loop in addition to many breaks. The loop length is 4 to 6km in length, depending on how many detours you choose to take (indicated in the steps below by 'a' 'b'). Be mindful that the path can be *very slippery* after the rain, especially when walking on stone. The map below is approximate. We advise you take this path anti-clockwise, as described below, for easier navigation.



1. Start from the two water tanks towards the entrance then turn left at the **sign**. The path goes down, then passes the windmill.



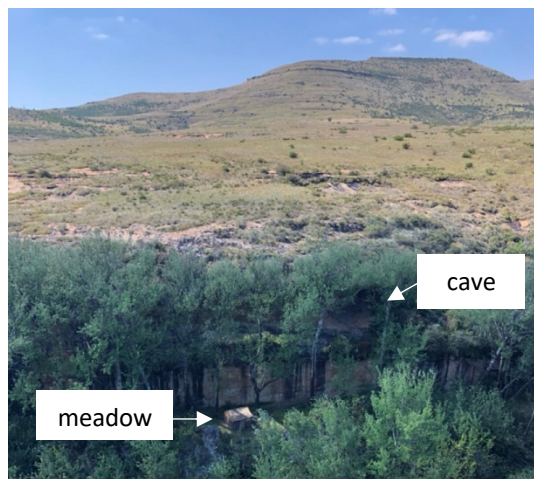
2. You will find a shaded **rest area** on the left.



Cross the small river three times, then climb up the path.

3a. You can continue to the **large cave** then retrace your steps, either to the meadow (see 3b), or up left to the top of the plateau.

3b. Or go down (left) to the **meadow**. From the meadow you can continue to a steep descent to the **retreat** then walk back up to the top of the plateau.



View from the opposite side

4. Reach the **picturesque spot** on the plateau.



5. Continue straight to reach the top of the **cascade**.



6. The path continues on the other side of the plateau then descends to a *junction* (steep).



7. If you turn *left* at the *junction* you will access the bottom of cascade 1 (the **veil**), through a **tunnel**. Near the river, you can take the path on the left if the tunnel entrance is too slippery. Then retrace your steps, towards the *junction*, and continue straight (see step 8).



8. If you turn *right* at the junction you will reach **the river** surrounded by two large boulders (good picnic / rest spot).



9. From the river, at the next *junction*, turn *left** to go back to the *Domaine* where you follow the bottom of the cliff.

*A right turn continues to St Fort for a much longer hike, outside our property. You would need to seek authorisation

10. At the next *junction*, you can go left (steep climb) to the **small cave** (good rest spot), then continue from the cave up to Cottage Goji.



View from the small cave

11. Or you can *continue straight** to pass another cave, then veer left, and up to the Domaine.

At the top, cross some barbed fences. The **sunset cave** can be reached a bit later on the left.



View from the sunset cave

Retrace your steps then follow the plateau on the stones to join Cottage Goji.

*Be mindful that you are hiking on St Fort property along this path.